

Excellence in Catholic Education Initiative

Results are currently in the process of being standardized.
Results at this time may not necessarily be exactly comparable between schools.

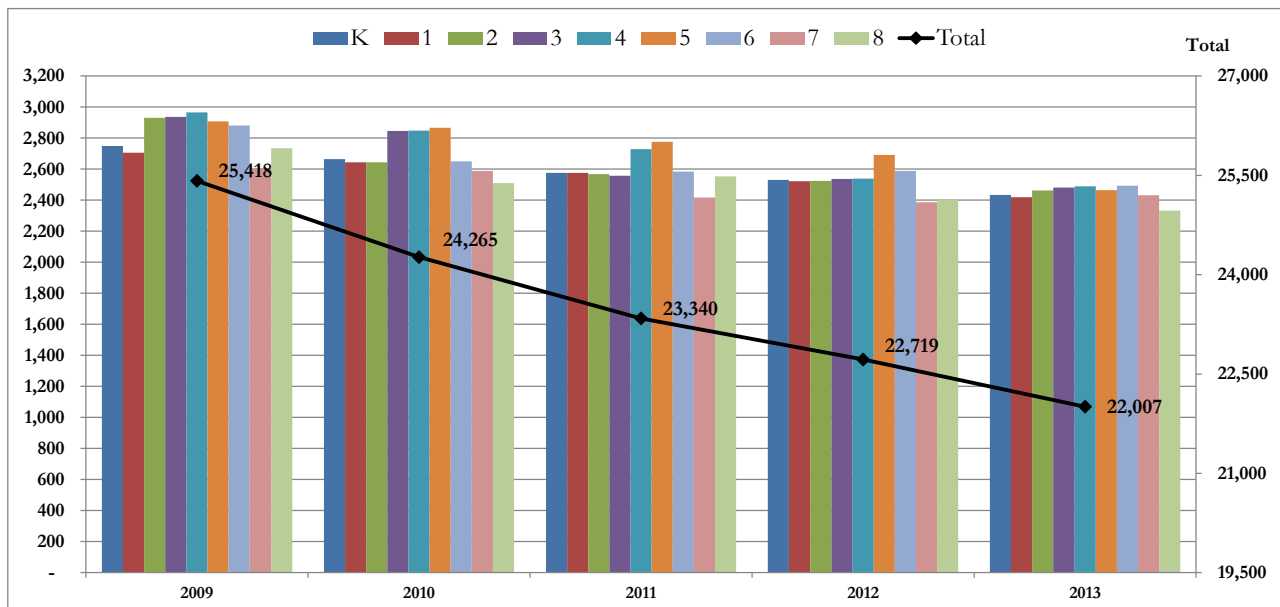
Fiscal Year 2012-2013 K - 8 Based on 73 (out of 79) Schools Who Submitted Information

	Low	Range Average	High
Total Expenses Per School	\$213,706	\$1,436,214	\$4,204,508
Cost to Educate Per Student	\$2,631	\$5,900	\$9,261
Salaries & Benefits as a % of Total Expenses	62.12%	78.40%	91.55%
Tuition Per School	\$32,200	\$875,359	\$3,481,860
Tuition Collected Per Student	\$251	\$3,175	\$6,335
Tuition as a % of Total Revenue	3.53%	54.55%	94.09%
Fundraising/Donations Per School	\$0	\$148,594	\$944,056
Fundraising/Donations Per Student	\$0	\$744	\$3,702
Fundraising/Donations as a % of Total Revenue	0.00%	12.42%	52.13%
Parish Investment Per School	\$0	\$327,941	\$919,858
Parish Investment Per Student	\$0	\$1,591	\$4,612
Parish Investment as a % of Total Revenue	0.00%	26.16%	55.75%
Parish Investment as a % of Envelope/Plate (Parish Schools Only)	1.21%	34.21%	134.92%

*Parish Investment includes Archdiocesan Subsidy

Enrollment	35	257	779
Number of Schools with Enrollment of:			
	<100	9	
	100 - 199	23	
	200 - 299	18	
	300 - 399	8	
	400 and Up	15	

Historical Enrollment K-8 All Schools



Source: MCEA Survey Data